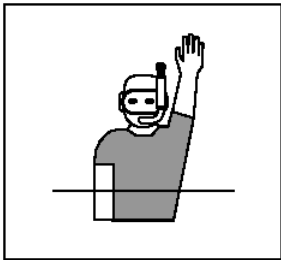


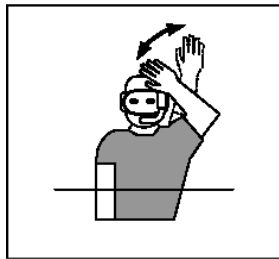
Referee's Hand Signals



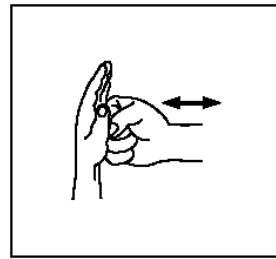
www.gbuwh.co.uk



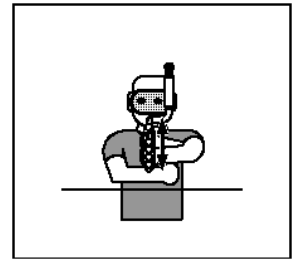
Ready to start play



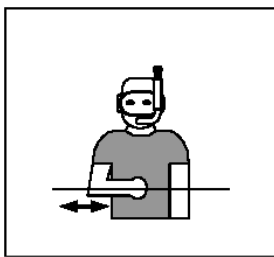
Stop Play



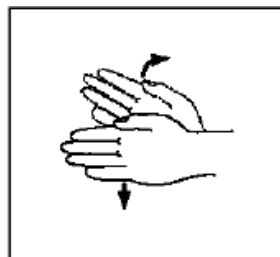
Advancing the puck with the glove, free hand or body



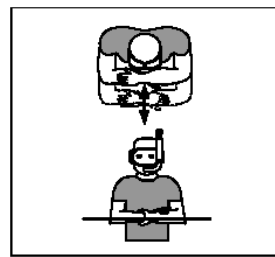
Stick Infringement



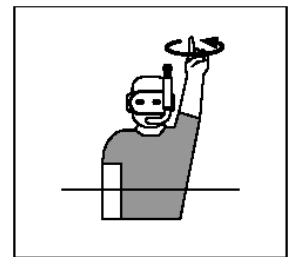
Illegal use of the Free Arm



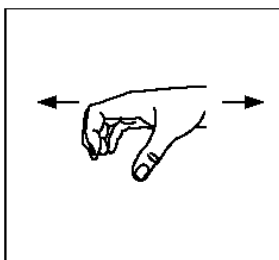
Illegally Stopping the Puck



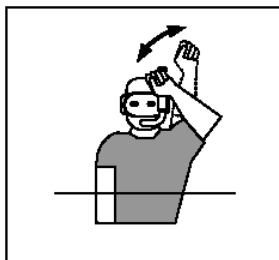
Obstruction, Barging, Blocking Shepherding



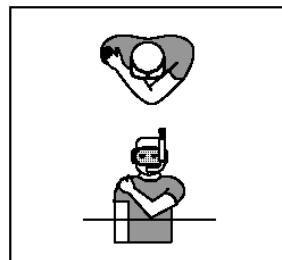
Breaking or Encroachment



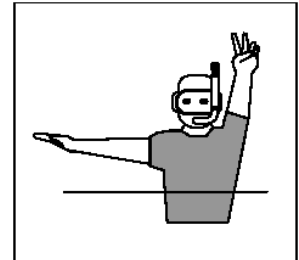
Grabbing and/or pulling on Barriers or Gullies



Unsportsmanlike Conduct



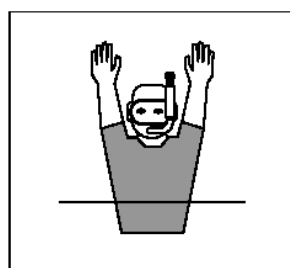
Delay of game (Corner)



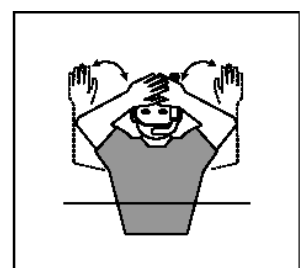
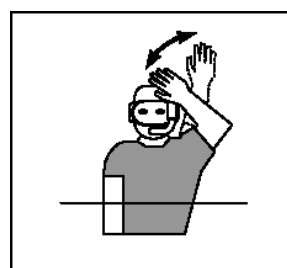
Time Penalty

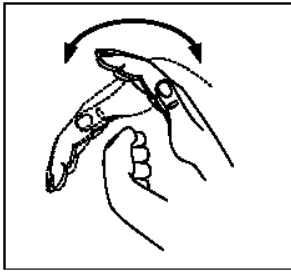


Goal – 2 signals

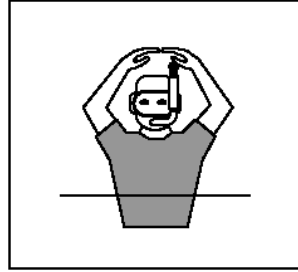


No Goal or Goal Successfully Defended – 2 signals

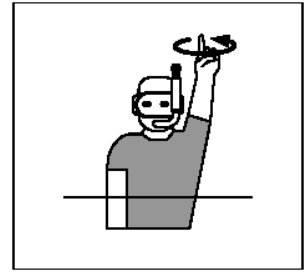
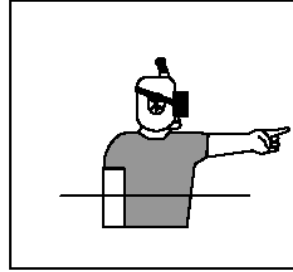




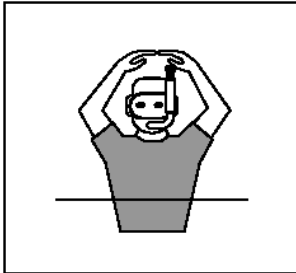
**Delay of Game
(Puck Out of Bounds)**



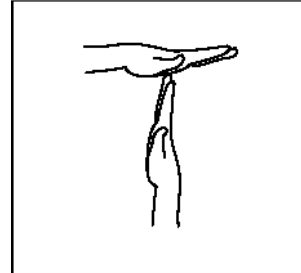
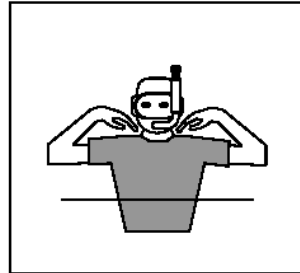
Team's Time Out – 2 signals



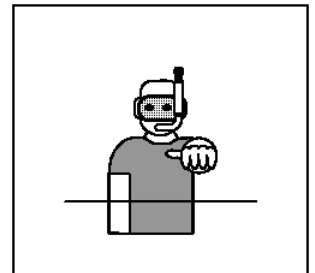
Incorrect Start



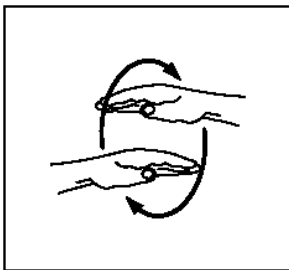
Referee's Time Out – 2 signals



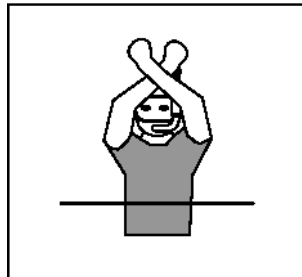
End of Timed Play



Warning



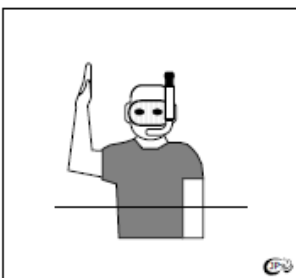
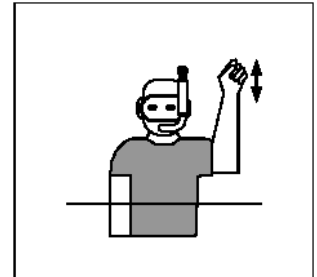
Illegal Substitution



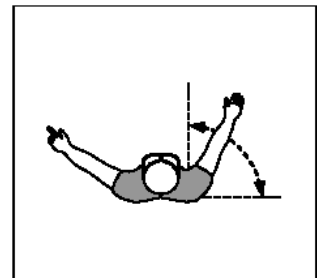
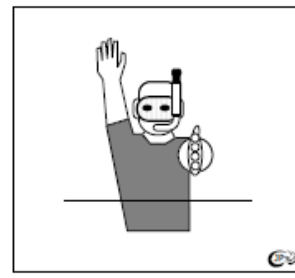
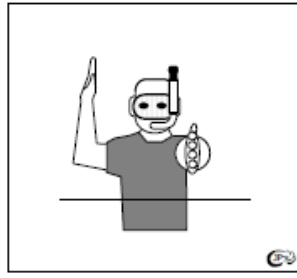
Equal Puck



Penalty Shot – 2 separate signals



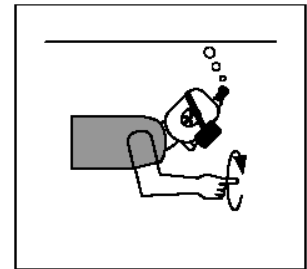
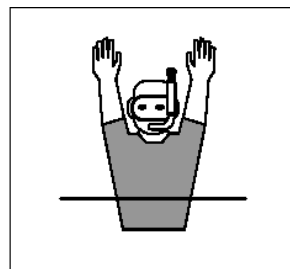
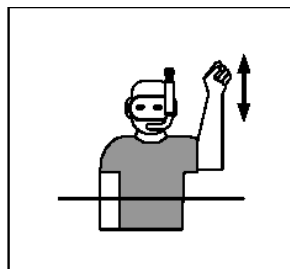
Advantage Puck – 3 separate signals



Total Dismissal



Penalty Goal – 3 separate signals



**Infringement Seen but
allowing play to continue to
advantage of infringed team**